

Surveyor WAHD

Subsea Colour Zoom HD Video Camera

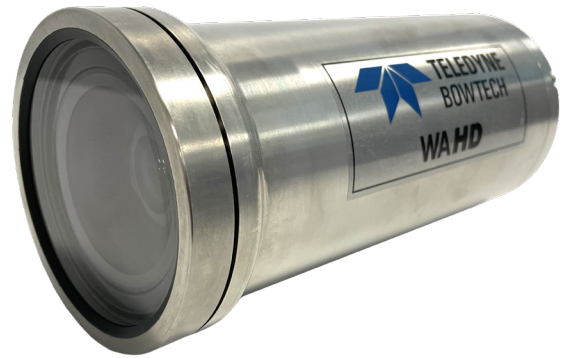
The Bowtech Surveyor WAHD is a cost-effective, high-definition (HD) video camera outputting a 16:9 aspect ratio picture. It has a 10:1 zoom feature and is designed to carry out detailed video inspection work with its close-up video capabilities.

The user will benefit from the camera's 74° wide viewing angle and range of light sensitivity controls, including manual and automatically adjustable focus and iris settings, white balance, auto tracking and back light compensation. The advanced feature set comes complete with a wide dynamic range to maximise the camera's video quality in a low-light environment.

The Surveyor WAHD camera is rated to 4,000m with a sapphire window. The titanium housing is offered with a choice of subsea connectors and wiring configurations.

Product features and benefits

- Wide-angle HD camera ideal for subsea video inspection work
- 16:9 aspect ratio display setting
- Durable, high-quality 4000m rated titanium housing
- Selectable HD formats for different output requirements
- 10:1 optical zoom feature for great close-up details
- User-friendly camera controls



The adjustable functions offered with this feature-packed camera can be controlled by a single wire/tristate/Bluetooth or via a Bowtech GUI software (USB stick) and user selectable RS-232/RS-485 coms interface connected either to a laptop or PC.

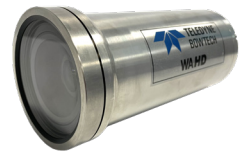
This HD subsea camera is ideal for colour inspection and observation tasks and is part of a family of products that produces detailed video images for use on many different types of subsea applications and vehicles across the world's oceans.

Please contact a member of our sales team to discuss your specific requirements when ordering this camera, including your connector, and wiring configuration.



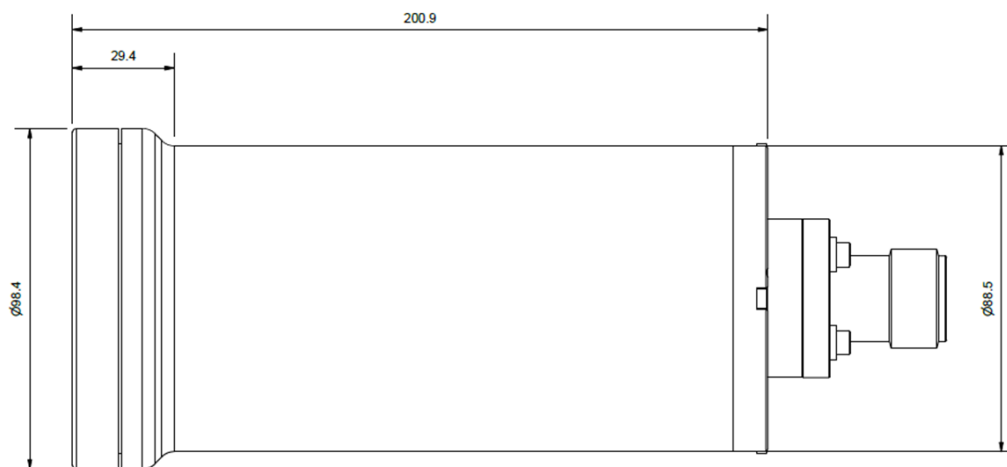
TELEDYNE MARINE
BOWTECH
Everywhereyoulook™

Surveyor WAHD Subsea Colour Zoom HD Video Camera



SYSTEM SPECIFICATIONS

Electrical:	Nominal voltage	24Vdc (11Vdc to 30Vdc)
	Current at nominal voltage	0.4A
	Power	9.6W
	Video output	HD-SDI over coax
	Connectors	Contact for options
	Control method	Bluetooth (not for subsea use), RS-232, RS-485, Tristate, 2-wire bipolar
	Display setting	16:9 aspect ratio
Optical:	Sensor	1/2.8"
	Resolution	1920 x 1080 pixels (max.)
	Sensitivity	0.35lx (scene)
	Active pixels	2.38MP
	Signal to noise ratio	>50dB
	Lens	Wide/tele: 3.8-38.0mm @ F1.8-F3.4
	Optical zoom	10:1
	Angle of view in water	Diagonal: 74°, horizontal: 66.3°, vertical: 40.4°
Mechanical:	Housing/window	Titanium Grade 5/sapphire glass
	Dimensions	Ø98.4mm (retainer), Ø88.5mm (body) x 200.9mm length (excl. connector)
	Weight in air/water	2.74kg/1.46kg
Environmental:	Water depth rating	4000m
	Storage temperature	-20 to +60°C
	Operating temperature	-5 to +50°C
	Shock	3 axis (operating), 30g peak, 6ms half sine pulse
	Vibration	3 axis (operating), 10g, 20 to 150Hz
	EMC	BS EN IEC 61000-6-4:2019, BS EN IEC 61000-6-2:2019, BS IEC 60533:2015
	RoHS	Directive 2011/65/EU



Product Dimensions (for reference only)



TELEDYNE MARINE
BOWTECH
 Everywheretheyoulook™

www.teledynemarine.com/bowtech

Tel. +44 (0)1224 772345

Email: bowtech@teledyne.com

